



## Doosan Ultimate 270 RRV

This new generation RRV is the ultimate in flexibility.

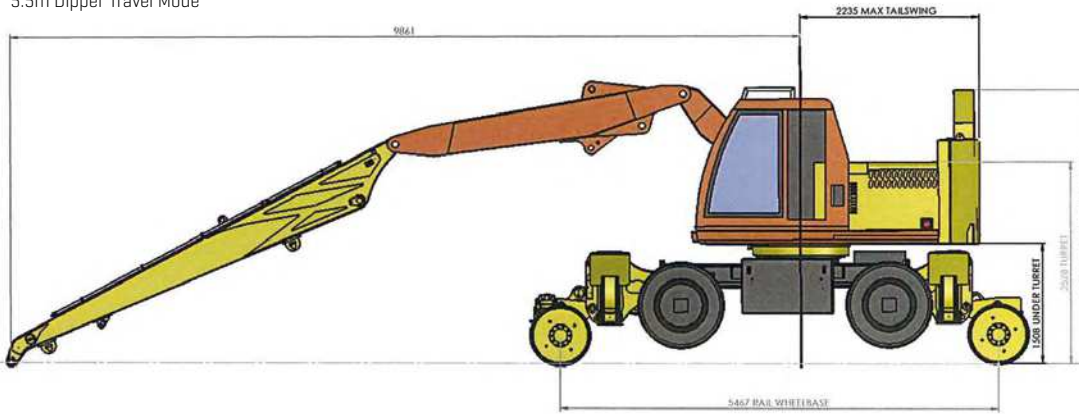
The machine comes with two interchangeable dipper arms. The 5.5m dipper gives the machine 'long reach' ability with a total reach of around 11m. This not only allows you to place OLE structures high up in the air, but also gives you the reach to place materials across adjacent lines and into the CESS. This means that on a two-road track you can deliver materials to both sides from one road resulting in improved efficiency.

The second 1.8m dipper arm gives you the close in reach for heavy lifting and a bucket can be fitted for digging and profiling.

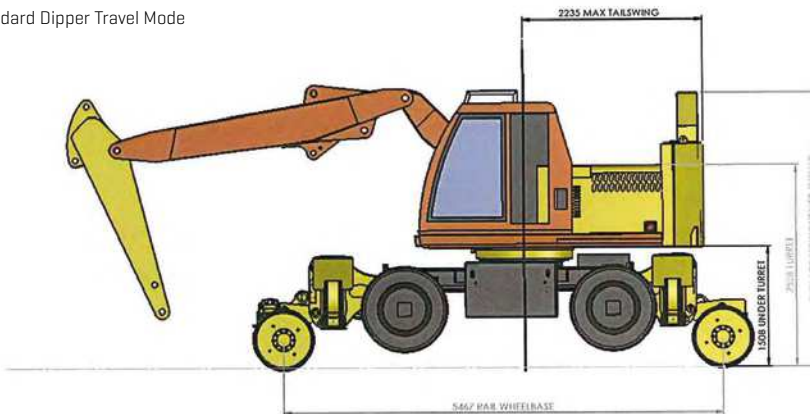
This machine can run MOVAX and BSP piling hammers with the 1.8m dipper arm fitted.

Doosan Ultimate 270 is fitted with outriggers which means it has massive over the side lifting capabilities. This is extremely useful when piling lineside enabling the machine to reach and install piles that other machines cannot reach. It is fitted with a spaceguard system so it can work both ALO and under live OLE.

### 5.5m Dipper Travel Mode



### Standard Dipper Travel Mode



The Doosan 270 Ultimate truly is a versatile Road Rail machine. With the 2 dipper arms & many hydraulic services it is fitted with, the Doosan 270 can easily be transformed from an excavator using a bucket to an excavator crane utilising a wide variety of hydraulic attachments to a heavy lift piling machine or even machine capable of delicate long reach work.

- ▶ Hydrostatic drive.
- ▶ Can be fitted with either a 2.1m (giving a reach of 7.3m & a maximum height of 8.0m) or a 5.5m dipper arm (giving a maximum radius of 10.75m with a height of 11.5m). With the 5.5m dipper arm at maximum radius and horizontal a hydraulic limit of 3.6 tonnes can be achieved.
- ▶ Stabiliser legs at each corner of the machine to provide additional stability in operation all of which can be deployed & retracted independently of each other (with stabilisers deployed a maximum lifting capacity of 6.67tonnes can be achieved at maximum radius with the 2.1m dipper arm).
- ▶ Stabilisers when deployed land beyond the sleeper ends thus avoiding any sleeper loading concerns.
- ▶ Stage IV engine providing increased power, torque & fuel economy.
- ▶ Ad-Blue/DEF system for improved emissions.
- ▶ LUL spec.
- ▶ Twin Cab.
- ▶ Hydraulic & Air braking systems.
- ▶ High Integrity ALO compliant.
- ▶ Live OHLE compliant.
- ▶ Towing capacity of 48000kg.
- ▶ Internal noise level of 85dB.
- ▶ Working gradient – 1 in 25.
- ▶ Working cant – 150mm.
- ▶ Travelling cant – 200mm.

#### General Enquiries

0118 9774 901  
info@readypower.co.uk

#### Head of Operations North

Dale Bottom  
07971 213434  
DaleB@readypower.co.uk

#### Head of Operations South

Steve Ford  
07720 200211  
SteveF@readypower.co.uk

#### Senior Commercial Manager

James Stanford  
07854 561229  
JamesS@readypower.co.uk

#### Readypower Rail Services Ltd

Readypower House  
Molly Millars Bridge  
Wokingham  
Berkshire  
RG41 2WY