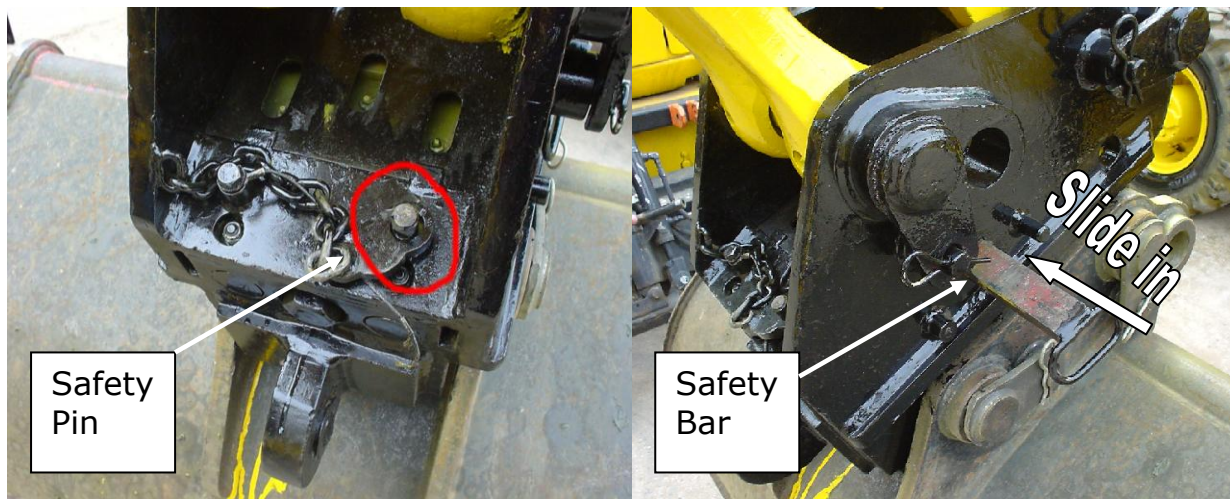


Date: 20<sup>th</sup> September 2006

## SAFETY BRIEFING

### Quick Hitch Safety Pins

Whenever a quick hitch is coupled to an attachment the safety pin and safety bar (where this is fitted) provided must be inserted prior to the attachment being used. This includes buckets. The safety pin is shown below for reference.



A site foreman was fined £1,500 after he pleaded guilty at the City of London Magistrates' Court

The HSE investigation revealed that the safety pin had not been inserted in the quick-hitch,

Section 7(a) of the Health and Safety at Work etc Act 1974 states:

"It shall be the duty of every employee while at work to take reasonable care for the health and safety of himself and of other persons who may be affected by his acts or omissions at work."